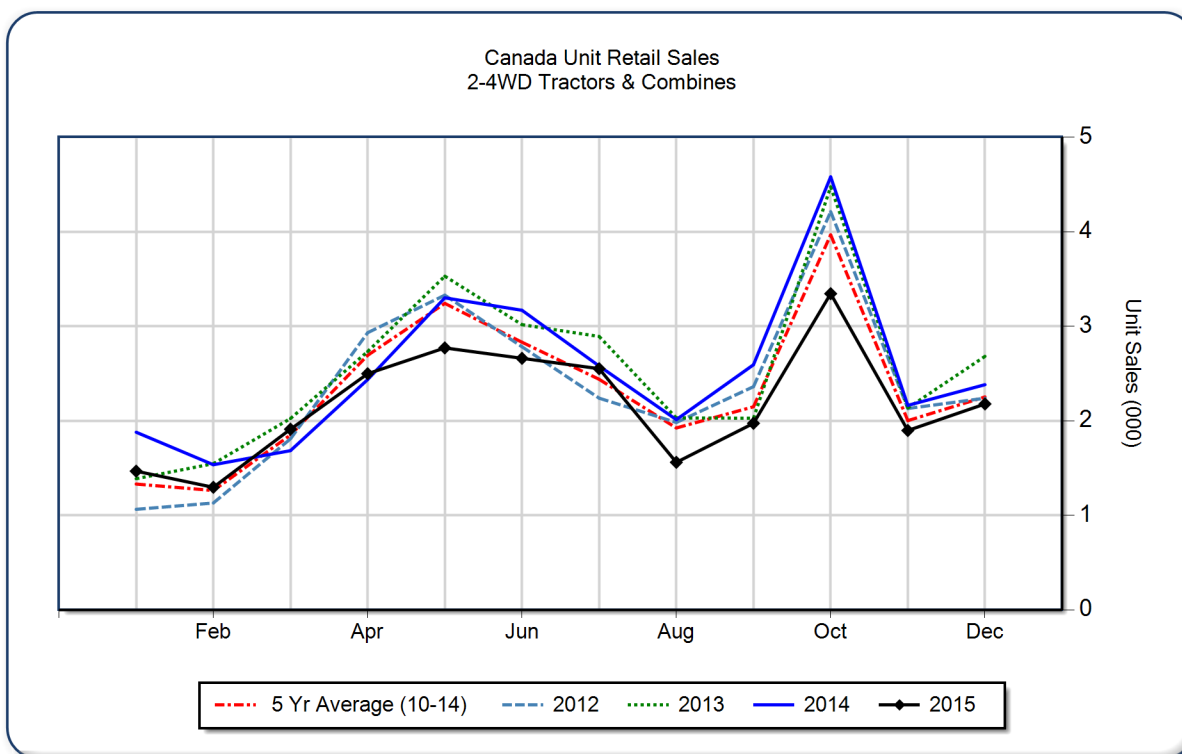


December 2015 Flash Report Canada Unit Retail Sales

Copyright, AEM. All rights reserved. If data is referenced, please acknowledge AEM as the source.

	December			YTD - December			Beginning Inventory Dec 2015
	2015	2014	%Chg	2015	2014	%Chg	
2WD Farm Tractors							
< 40 HP	837	1,039	-19.4	12,792	13,968	-8.4	8,750
40 < 100 HP	665	692	-3.9	6,101	7,158	-14.8	4,107
100+ HP	373	394	-5.3	4,388	5,718	-23.3	2,242
Total 2WD Farm Tractors	1,875	2,125	-11.8	23,281	26,844	-13.3	15,099
4WD Farm Tractors	106	89	19.1	879	1,227	-28.4	313
Total Farm Tractors	1,981	2,214	-10.5	24,160	28,071	-13.9	15,412
Self-Prop Combines	197	168	17.3	1,948	2,243	-13.2	385



These data are, in part, estimates that are subject to revisions when final detailed data become available. Because of the seasonal nature of the industry, comparisons of monthly data from one period to another should be done with extreme caution. These data represent most, but not all, of the manufacturers in each product category being sold at retail in Canada.

Restricted Information from the Association of Equipment Manufacturers