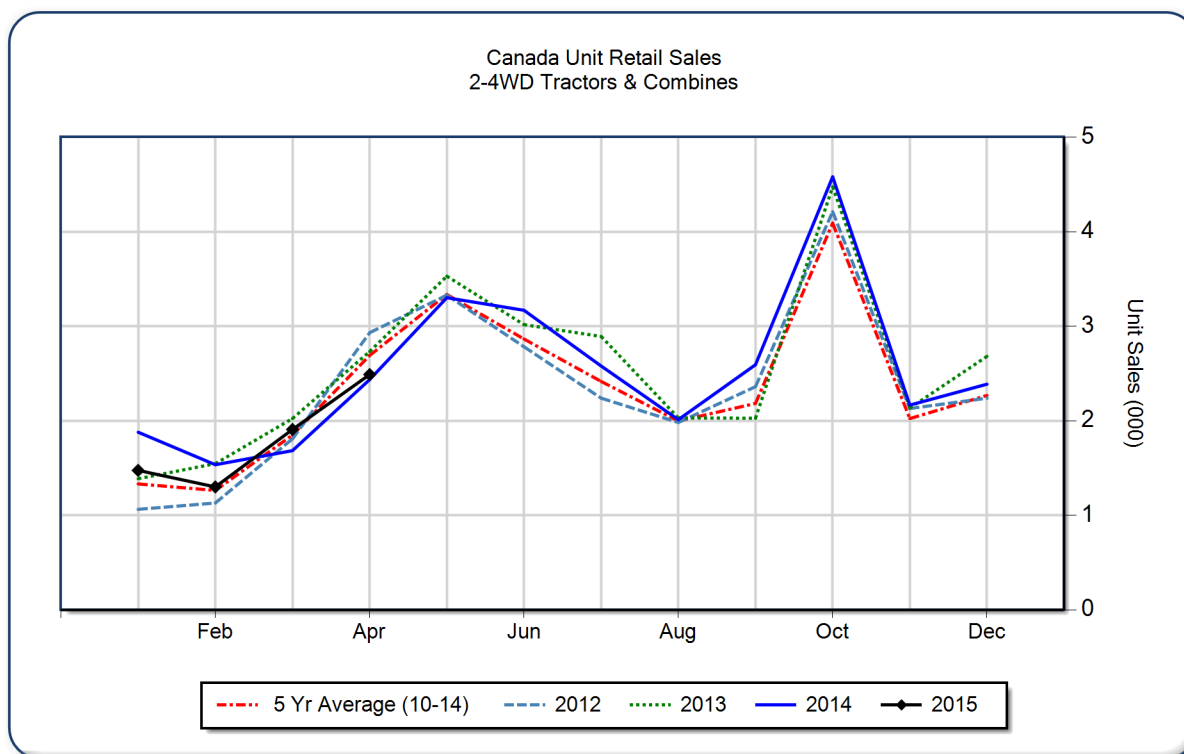


April 2015 Flash Report Canada Unit Retail Sales

Copyright, AEM. All rights reserved. If data is referenced, please acknowledge AEM as the source.

	April			YTD - April			Beginning Inventory Apr 2015
	2015	2014	%Chg	2015	2014	%Chg	
2WD Farm Tractors							
< 40 HP	1,255	1,144	9.7	3,249	3,110	4.5	8,907
40 < 100 HP	475	531	-10.5	1,596	1,770	-9.8	4,108
100+ HP	516	492	4.9	1,615	1,642	-1.6	2,765
Total 2WD Farm Tractors	2,246	2,167	3.6	6,460	6,522	-1.0	15,780
4WD Farm Tractors	162	159	1.9	381	489	-22.1	387
Total Farm Tractors	2,408	2,326	3.5	6,841	7,011	-2.4	16,167
Self-Prop Combines	81	110	-26.4	331	523	-36.7	645



These data are, in part, estimates that are subject to revisions when final detailed data become available. Because of the seasonal nature of the industry, comparisons of monthly data from one period to another should be done with extreme caution. These data represent most, but not all, of the manufacturers in each product category being sold at retail in Canada.

Restricted Information from the Association of Equipment Manufacturers