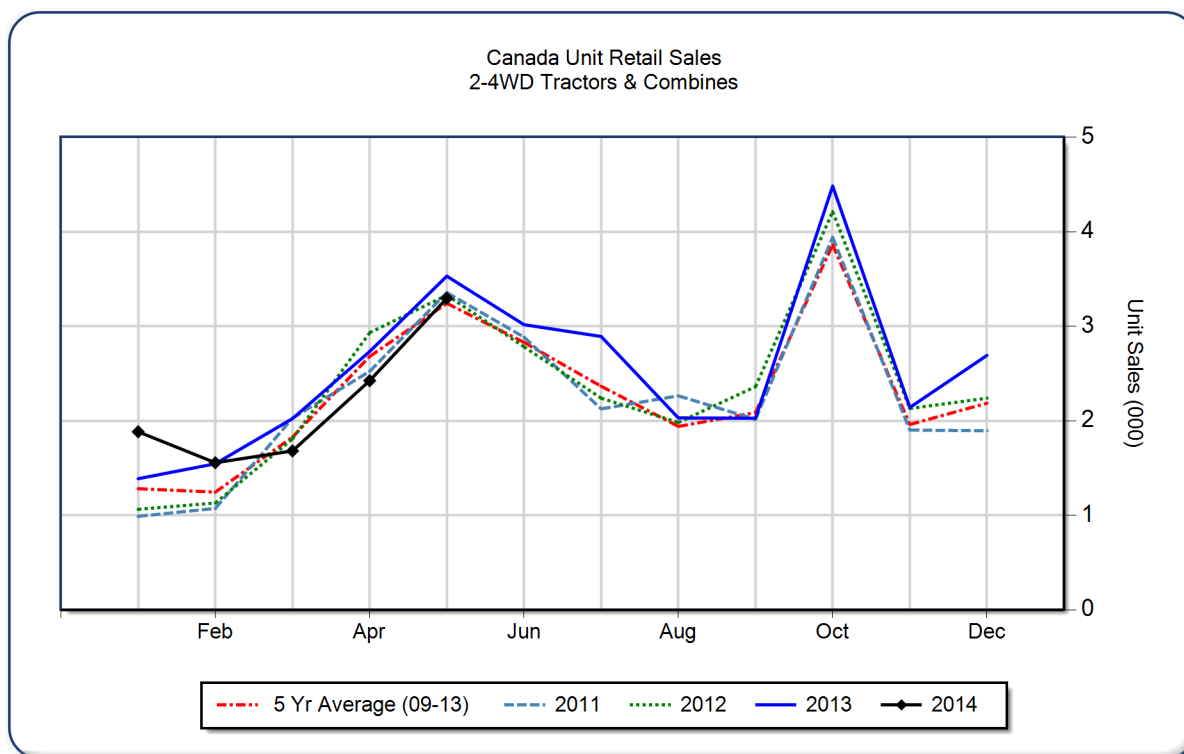


May 2014 Flash Report Canada Unit Retail Sales

Copyright, AEM. All rights reserved. If data is referenced, please acknowledge AEM as the source.

	May			YTD - May			Beginning Inventory May 2014
	2014	2013	%Chg	2014	2013	%Chg	
2WD Farm Tractors							
< 40 HP	1,915	2,026	-5.5	5,044	5,148	-2.0	7,490
40 < 100 HP	609	633	-3.8	2,377	2,328	2.1	3,852
100+ HP	558	544	2.6	2,192	2,195	-0.1	2,906
Total 2WD Farm Tractors	3,082	3,203	-3.8	9,613	9,671	-0.6	14,248
4WD Farm Tractors	115	126	-8.7	603	745	-19.1	593
Total Farm Tractors	3,197	3,329	-4.0	10,216	10,416	-1.9	14,841
Self-Prop Combines	99	201	-50.7	625	802	-22.1	807



These data are, in part, estimates that are subject to revisions when final detailed data become available. Because of the seasonal nature of the industry, comparisons of monthly data from one period to another should be done with extreme caution. These data represent most, but not all, of the manufacturers in each product category being sold at retail in Canada.

Restricted Information from the Association of Equipment Manufacturers