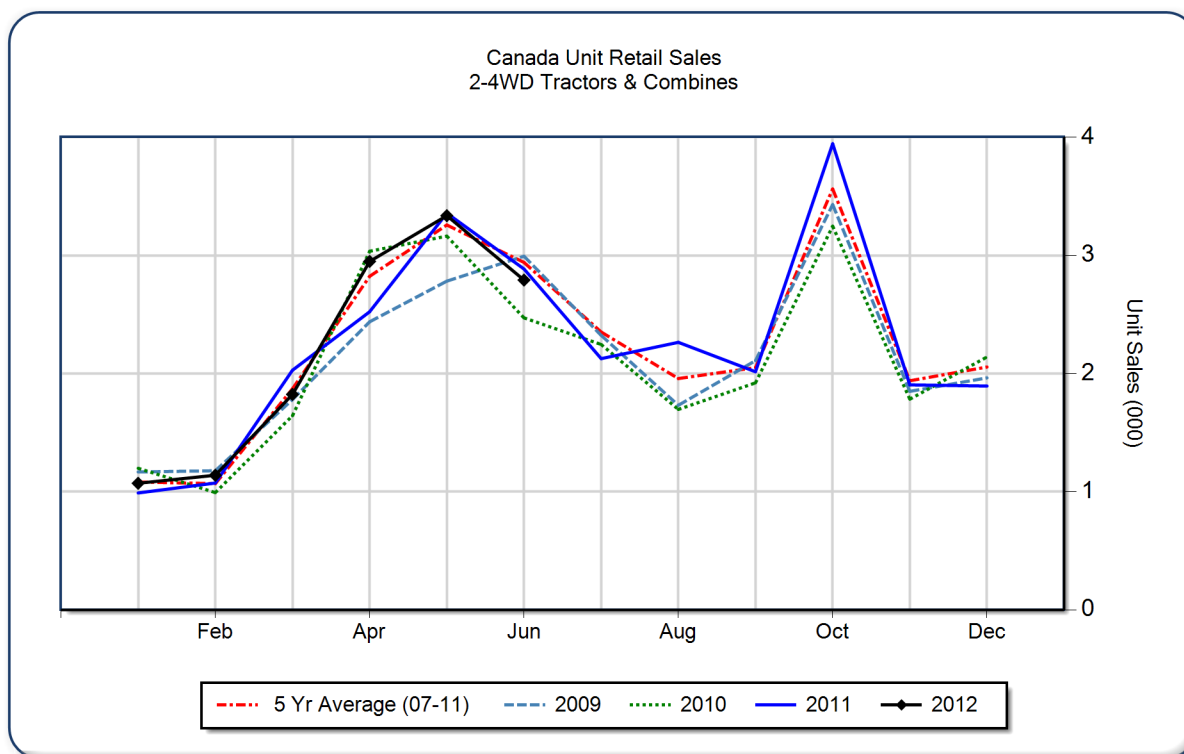


June 2012 Flash Report Canada Unit Retail Sales

Copyright, AEM. All rights reserved. If data is referenced, please acknowledge AEM as the source.

	June			YTD - June			Beginning Inventory Jun 2012
	2012	2011	%Chg	2012	2011	%Chg	
2WD Farm Tractors							
< 40 HP	1,543	1,589	-2.9	6,152	6,020	2.2	8,707
40 < 100 HP	581	622	-6.6	3,018	2,961	1.9	3,617
100+ HP	353	359	-1.7	2,319	2,073	11.9	1,863
Total 2WD Farm Tractors	2,477	2,570	-3.6	11,489	11,054	3.9	14,187
4WD Farm Tractors	70	64	9.4	787	736	6.9	389
Total Farm Tractors	2,547	2,634	-3.3	12,276	11,790	4.1	14,576
Self-Prop Combines	244	251	-2.8	833	1,065	-21.8	760



These data are, in part, estimates that are subject to revisions when final detail data become available. Because of the seasonal nature of the industry, comparisons of monthly data from one period to another should be done with extreme caution. These data represent most, but not all, of the manufacturers in each product category being sold at retail in Canada.

Restricted Information from the Association of Equipment Manufacturers