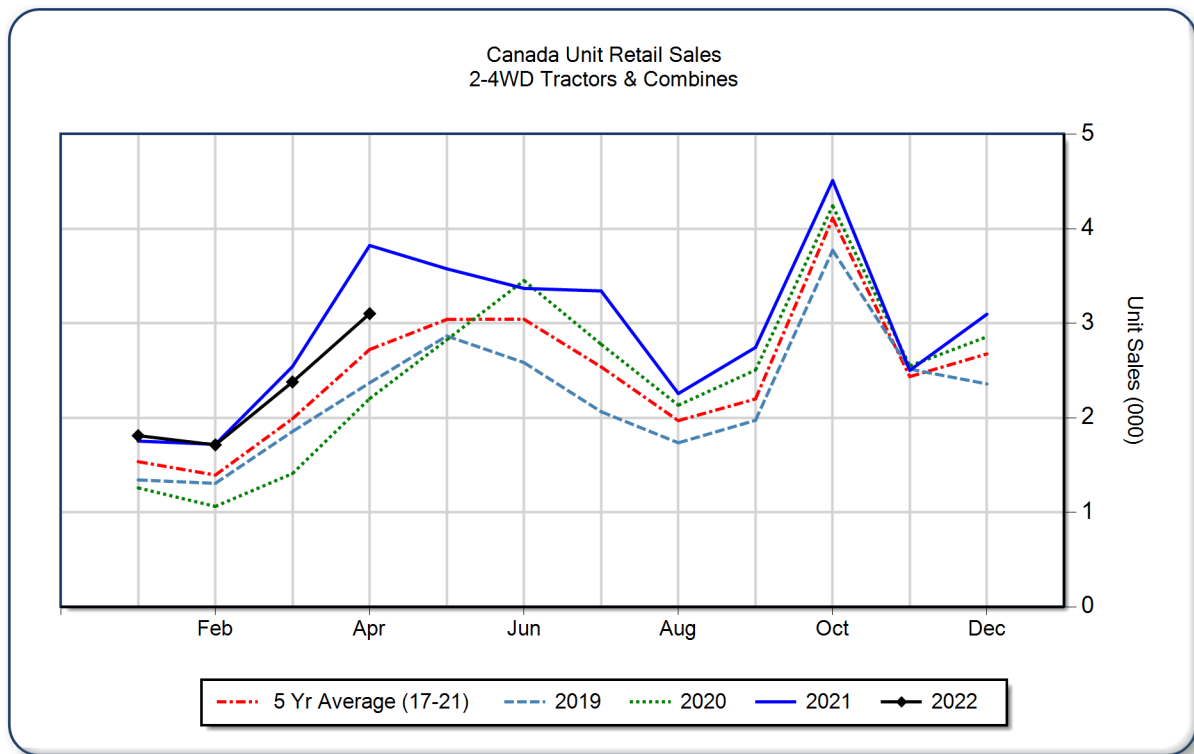


AEM Canada Ag Tractor and Combine Report April 2022

Copyright, AEM. All rights reserved. If data is referenced, please acknowledge AEM as the source.

	April			YTD - April			Beginning Inventory Apr 2022
	2022	2021	%Chg	2022	2021	%Chg	
2WD Farm Tractors							
< 40 HP	1,924	2,425	-20.7	5,695	6,187	-8.0	6,096
40 < 100 HP	521	593	-12.1	1,767	1,855	-4.7	2,291
100+ HP	445	476	-6.5	1,091	1,082	0.8	1,404
Total 2WD Farm Tractors	2,890	3,494	-17.3	8,553	9,124	-6.3	9,791
4WD Farm Tractors	102	201	-49.3	203	367	-44.7	90
Total Farm Tractors	2,992	3,695	-19.0	8,756	9,491	-7.7	9,881
Self-Prop Combines	110	128	-14.1	249	346	-28.0	323



The AEM Ag Tractor and Combine Report is provided monthly and is derived from AEM member companies through proprietary statistical reporting programs. The data is provided by AEM members and represents preliminary monthly retail sales of Ag equipment. Separate reports are available for the U.S., Canada and Russia. For more information, please visit: <https://www.aem.org/market-share-statistics/us-ag-tractor-and-combine-reports>. **Attention Media:** To speak with an AEM spokesperson about the data, please contact Sandra Mason at smason@aem.org.