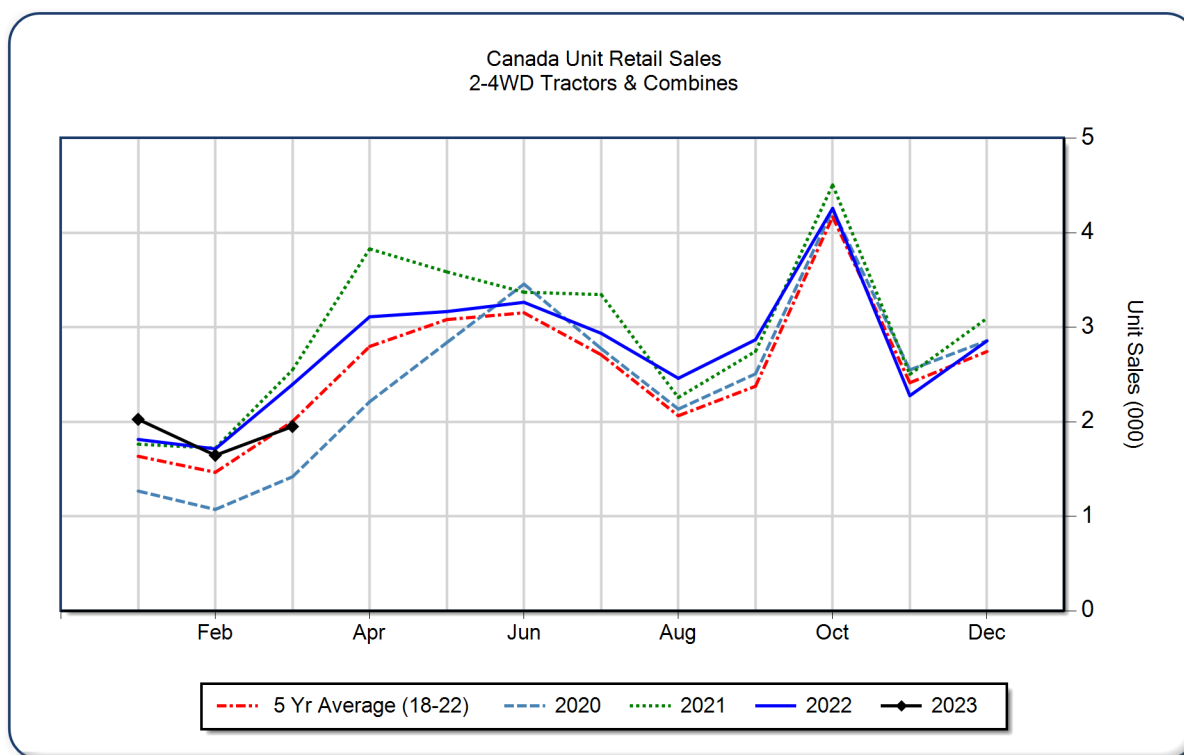


AEM Canada Ag Tractor and Combine Report March 2023

Copyright, AEM. All rights reserved. If data is referenced, please acknowledge AEM as the source.

	March			YTD - March			Beginning Inventory Mar 2023
	2023	2022	%Chg	2023	2022	%Chg	
2WD Farm Tractors							
< 40 HP	1,002	1,533	-34.6	2,997	3,795	-21.0	12,350
40 < 100 HP	416	489	-14.9	1,279	1,247	2.6	3,825
100+ HP	290	267	8.6	773	644	20.0	1,569
Total 2WD Farm Tractors	1,708	2,289	-25.4	5,049	5,686	-11.2	17,744
4WD Farm Tractors	77	49	57.1	166	99	67.7	127
Total Farm Tractors	1,785	2,338	-23.7	5,215	5,785	-9.9	17,871
Self-Prop Combines	165	57	189.5	406	136	198.5	340



The AEM Ag Tractor and Combine Report is provided monthly and is derived from AEM member companies through proprietary statistical reporting programs. The data is provided by AEM members and represents preliminary monthly retail sales of Ag equipment. Separate reports are available for the U.S., Canada and Russia. For more information, please visit: <https://www.aem.org/market-share-statistics/us-ag-tractor-and-combine-reports>. **Attention Media:** To speak with an AEM spokesperson about the data, please contact Sandra Mason at smason@aem.org.