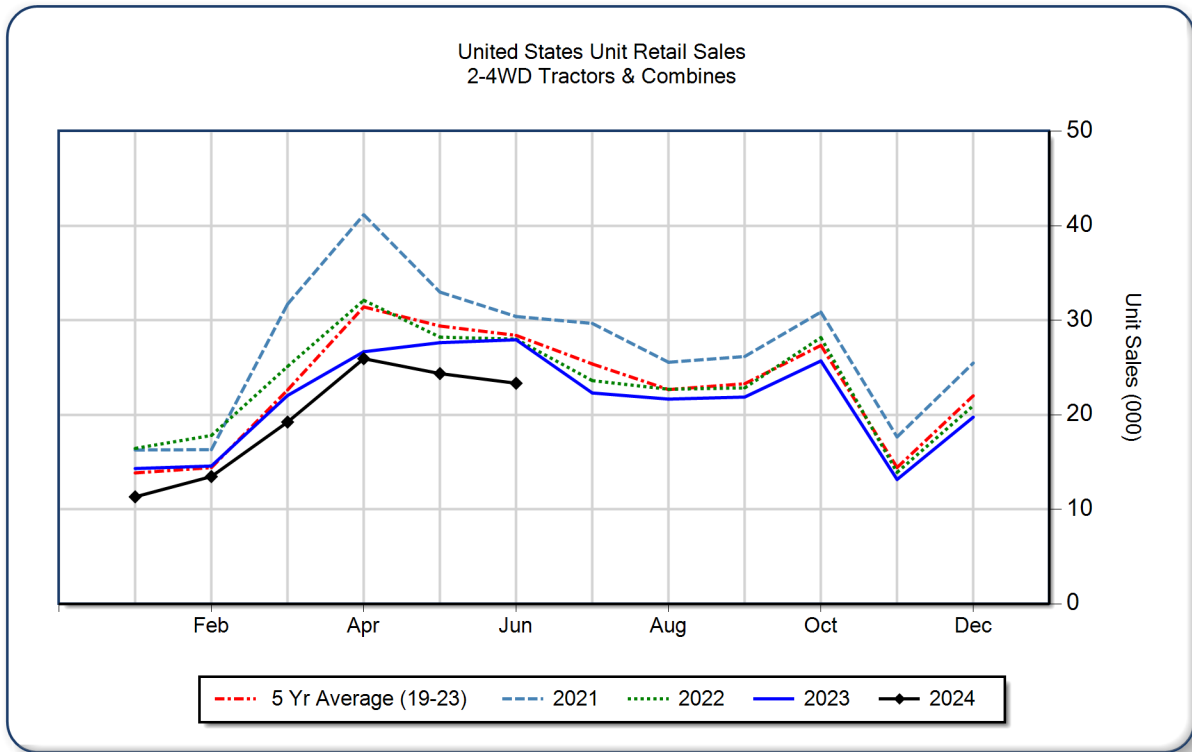


AEM United States Ag Tractor and Combine Report June 2024

Copyright, AEM. All rights reserved. If data is referenced, please acknowledge AEM as the source.

	June			YTD - June			Beginning Inventory Jun 2024
	2024	2023	%Chg	2024	2023	%Chg	
2WD Farm Tractors							
< 40 HP	14,793	18,187	-18.7	74,780	86,790	-13.8	82,130
40 < 100 HP	5,650	6,304	-10.4	26,480	28,976	-8.6	38,034
100+ HP	2,119	2,462	-13.9	11,776	12,289	-4.2	12,544
Total 2WD Farm Tractors	22,562	26,953	-16.3	113,036	128,055	-11.7	132,708
4WD Farm Tractors	308	312	-1.3	1,923	1,873	2.7	825
Total Farm Tractors	22,870	27,265	-16.1	114,959	129,928	-11.5	133,533
Self-Prop Combines	463	671	-31.0	2,673	3,232	-17.3	1,539



The AEM Ag Tractor and Combine Report is provided monthly and is derived from AEM member companies through proprietary statistical reporting programs. The data is provided by AEM members and represents preliminary monthly retail sales of Ag equipment. Separate reports are available for the U.S., Canada and Russia. For more information, please visit: <https://www.aem.org/market-share-statistics/us-ag-tractor-and-combine-reports>. **Attention Media:** To speak with an AEM spokesperson about the data, please contact Sandra Mason at smason@aem.org.