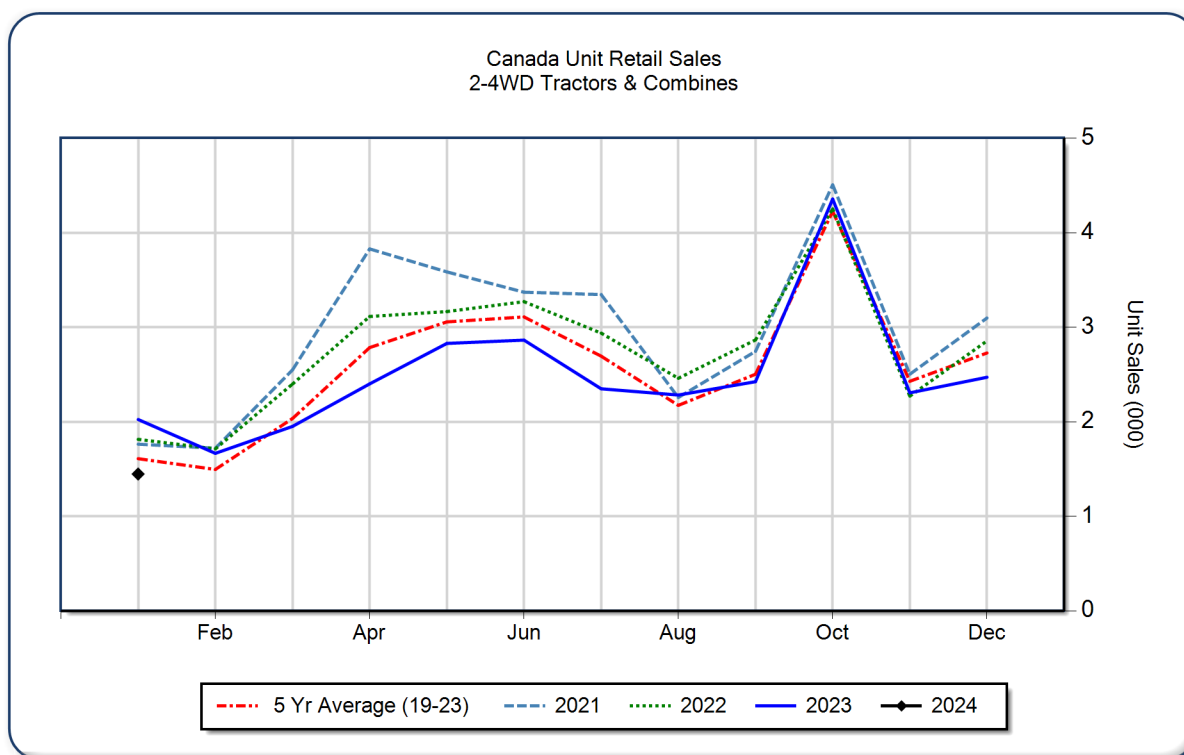


AEM Canada Ag Tractor and Combine Report January 2024

Copyright, AEM. All rights reserved. If data is referenced, please acknowledge AEM as the source.

	January			YTD - January			Beginning Inventory Jan 2024
	2024	2023	%Chg	2024	2023	%Chg	
2WD Farm Tractors							
< 40 HP	784	1,130	-30.6	784	1,130	-30.6	11,142
40 < 100 HP	302	458	-34.1	302	458	-34.1	4,173
100+ HP	188	250	-24.8	188	250	-24.8	2,152
Total 2WD Farm Tractors	1,274	1,838	-30.7	1,274	1,838	-30.7	17,467
4WD Farm Tractors	49	49	0.0	49	49	0.0	115
Total Farm Tractors	1,323	1,887	-29.9	1,323	1,887	-29.9	17,582
Self-Prop Combines	124	137	-9.5	124	137	-9.5	324



The AEM Ag Tractor and Combine Report is provided monthly and is derived from AEM member companies through proprietary statistical reporting programs. The data is provided by AEM members and represents preliminary monthly retail sales of Ag equipment. Separate reports are available for the U.S., Canada and Russia. For more information, please visit: <https://www.aem.org/market-share-statistics/us-ag-tractor-and-combine-reports>. **Attention Media:** To speak with an AEM spokesperson about the data, please contact Sandra Mason at smason@aem.org.